

15 St. Donats Court Laleston Close
Cardiff
CF5 5HY

Communal Hall

Entered via security intercom entry system. Door leading to communal garden at rear. Stairwell rising to top floor

Entrance Hall

Doors off leading to lunge, kitchen, bedroom & bathroom W.C. Radiator

Lounge 16'5" x 9'8" (max)

A generous sized living room with two windows to front. Radiator. Coved ceiling. Laminate floor



Kitchen 10'1" x 7'10"

A well-proportioned sized kitchen housing a selection of wall & base units incorporating worktop space with sink unit, plumbing for washing machine. Integrated electric oven, hob & extractor fan. Window. Airing cupboard. Laminated floor. Radiator



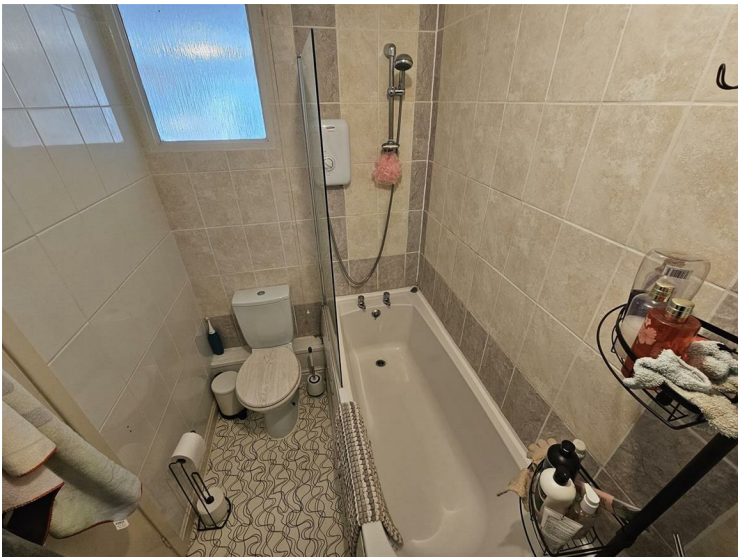
Bedroom 13'7" x 8'7"

large double bedroom featuring fitted mirror wardrobes. Window, Radiator



Bathroom W.C,

Suite comprising of low-level W.C. Pedestal wash hand basin. Paneled bath incorporating glazed screen and electric shower. Tiled splash backs. Chrome heated tower rail



Communal Garden

Large communal garden mainly laid to lawn

FIXTURES AND FITTINGS

Only those items specifically mentioned in these sales particulars are included within the sale price, any other item being expressly excluded from the sale. Hoskins Morgan have NOT tested any apparatus, equipment,

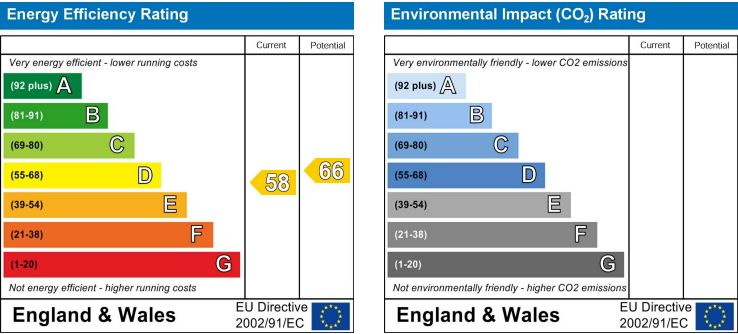
fixtures and so cannot verify they are in working order or fit for their purpose. The buyers are advised to obtain verification from their solicitor or surveyor.

PROPERTY MISDESCRIPTIONS ACT 1991:

These particulars have been prepared with care and approved by the vendors (wherever possible) as correct, but are intended as a guide to the property only, with measurements being approximate and usually the maximum size which may include alcoves, recesses or otherwise as described, and you must NOT rely on them for any other purpose. The appearance of an item in any photograph does not mean that it forms part of the property or sale price. Always contact the appropriate Hoskins Morgan branch for advice or confirmation on any points.

TENURE

The vendors advise the property to be Leasehold. 89 Years remaining. No Ground Rent. Service charge of £57.50 pcm. Hoskins Morgan would stress that they have NOT checked the legal documents to verify the status of the property, and the buyer is advised to obtain verification from their solicitor or surveyor.





15 St. Donats Court Laleston Close, Cardiff, CF5 5HY



First Time Buyers Look! A Purpose-Built Top Floor Flat Situated To The West Side of Cardiff. Accommodation Briefly Comprises Of Communal Hall & Stairwell, Entrance Hall, Lounge, Fitted Kitchen, Double Bedroom & Bathroom W.C. Gas Central Heating. Upvc Windows. Communal Garden To Rear. Intercom Entry System. Council Tax Band 'A' Energy Rating 'D' Well Worth Viewing